

OASI BONDING FLANGE DRAIN

All Flat Gray with Glossy Black ink Theme

CLAMPING RING DRAIN RISER

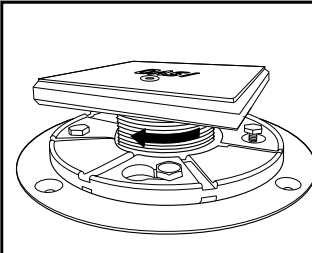
GRAY MAT FINISH

Glossy Black

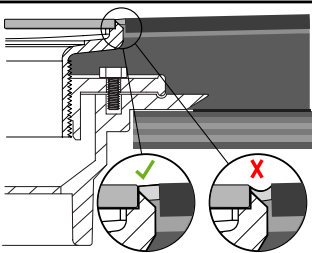
OASI
DRAIN

INSTALLATION

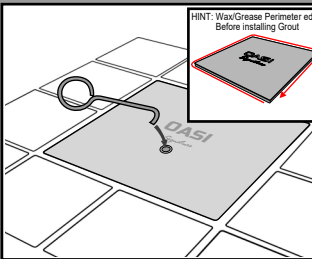
STEP 1. Thread & Adjust Riser Height



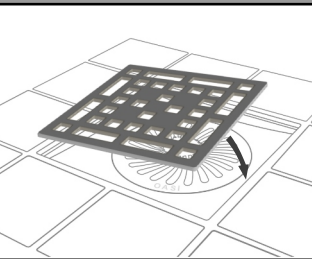
STEP 2. Install Mortar Bed, Tile & Grout



STEP 3. Remove Construction Plug

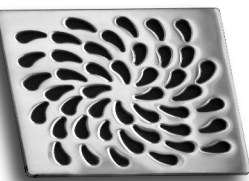
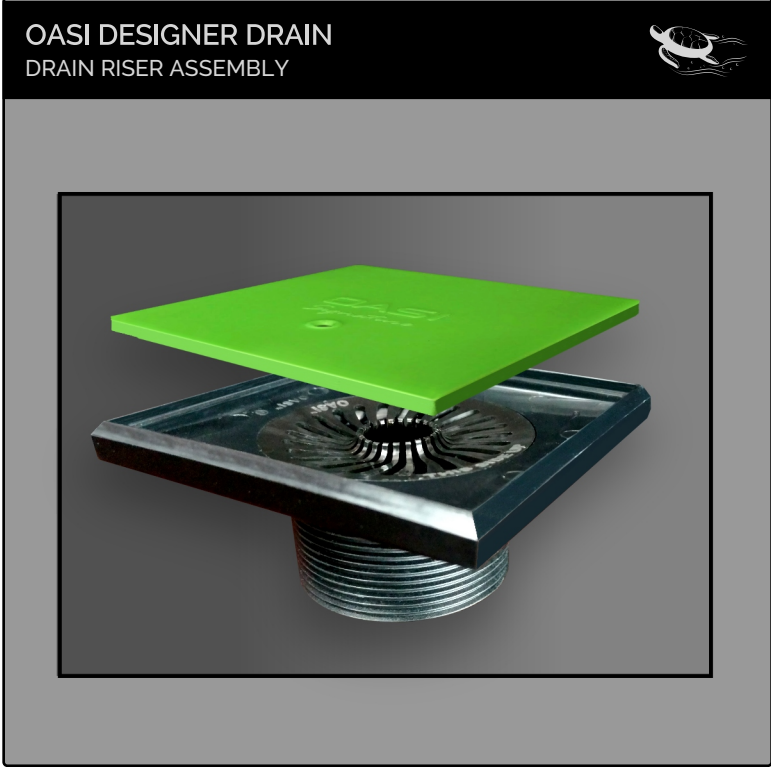
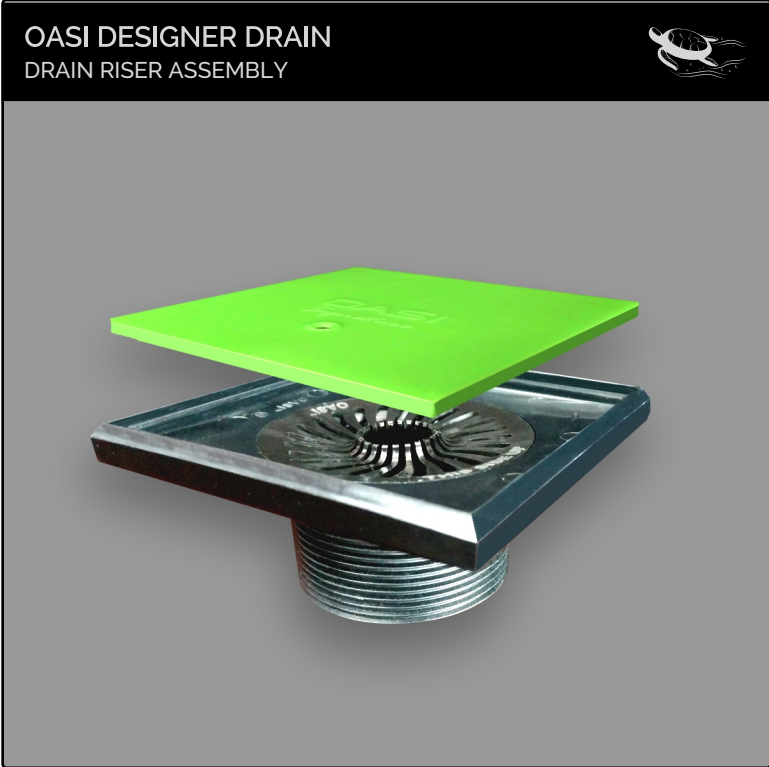


STEP 4. Insert Oasi Drain Grate



Drain Grate and Optional
Adaptor Ring Sold Separately

OASI
DRAIN



Drain Grates Sold Seperately

INSTALLATION INSTRUCTIONS

New Waste Pipe Application



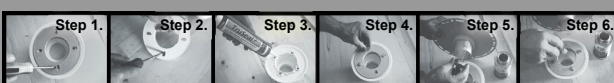
Step 1. Dry-fit the Oasi drain bonding flange body onto the newly installed 2-inch waste pipe that is cut slightly (a couple of inches) longer than the top of the subfloor. Now, measure the distance that the outside edge of the bonding flange needs to go down to be at the desired final height. Next, cut the "measured amount" off from the 2-inch waste pipe.

Step 2. Dry-fit the Oasi drain bonding flange body to ensure the desired height is achieved. Remove flange.

Step 3. Apply a generous (approximately 1/4" thick) layer of thin-set mortar below the drain flange area.

Step 4. Cement the drain bonding flange body to the 2-inch waste pipe using thin-set mortar or PVC to ABS in needed cement glue, and at the same time embedding the bonding flange down into the thinset mortar.

Existing Drain Hub Application



Step 1. Remove the drain grate riser and clamping ring from the existing floor drain.

Step 2. Align the bolt pattern of the clamping ring with the bolt holes of the existing floor drain flange and around each bolt hole.

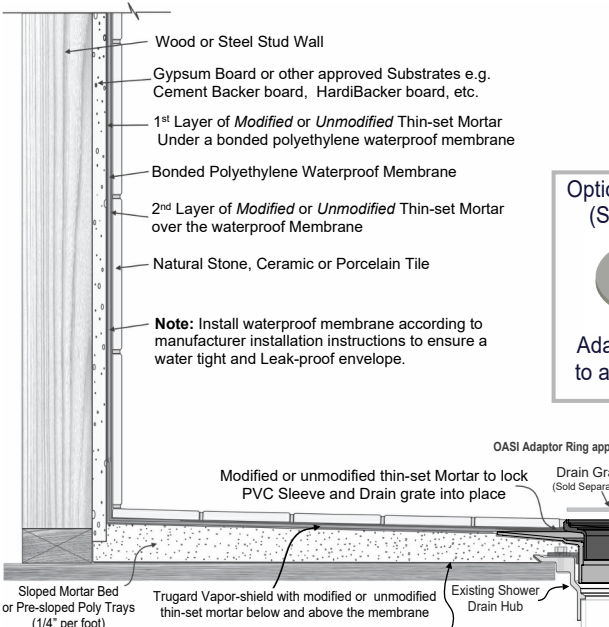
Step 3. Apply a continuous 1/4 inch bead of waterproof Sealant to the inside edge of the existing clamping floor drain flange and around each bolt hole.

Step 4. Install the adaptor ring on the existing floor drain flange, aligning the bolt holes. Reinsert and tighten the bolts using a crossing pattern.

Step 5. Insert the drain body into the adaptor ring. Apply the cement glue to both the Drain body sleeve and the inside opening of the Adaptor Ring.

Step 6. Insert glued Drain Body sleeve into Adaptor Ring and at the same time embedding the bonding flange down into the thinset mortar.

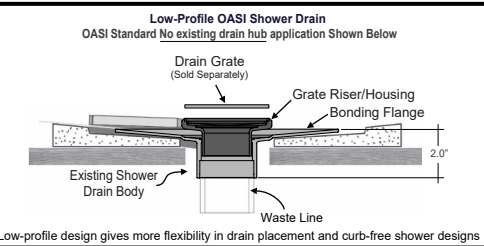
Detailed Cross-section



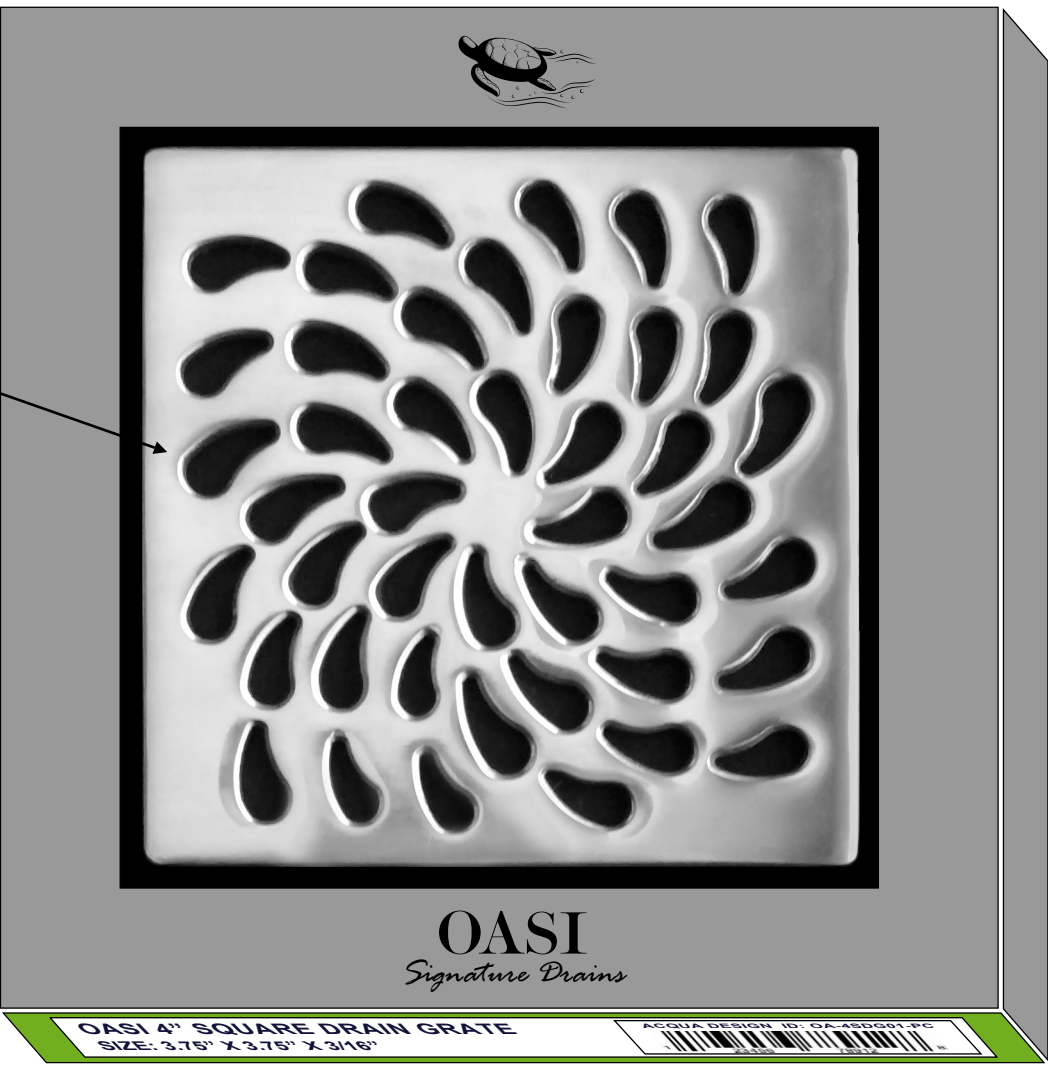
Optional Adaptor Ring
(Sold Separately)
Adapts existing Hub
to accept Oasi Drain

DRAIN FEATURES

- Wide Flange Funnel
- Heavy Duty Construction
- New Construction or Retro-fit
- Lifetime Warranty



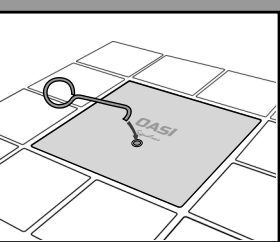
DRAIN GRATE BOX



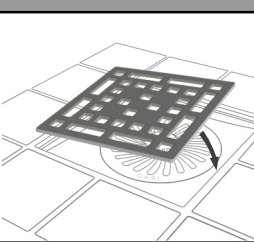
See Through plastic window

INSTALLATION

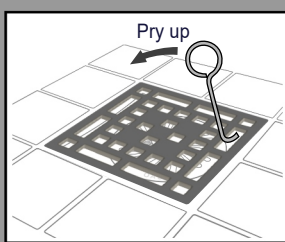
STEP 1. Remove Construction Plug



STEP 2. Insert Oasi Drain Grate



STEP 3. Remove Grate for Cleaning



DRAIN GRATE FEATURES

- Art Style Designs
- Ultra Strong Construction
- Grate puller included
- Lifetime Warranty

Visit www.oasihome.com about drain maintenance, finishes, installations and Warranty

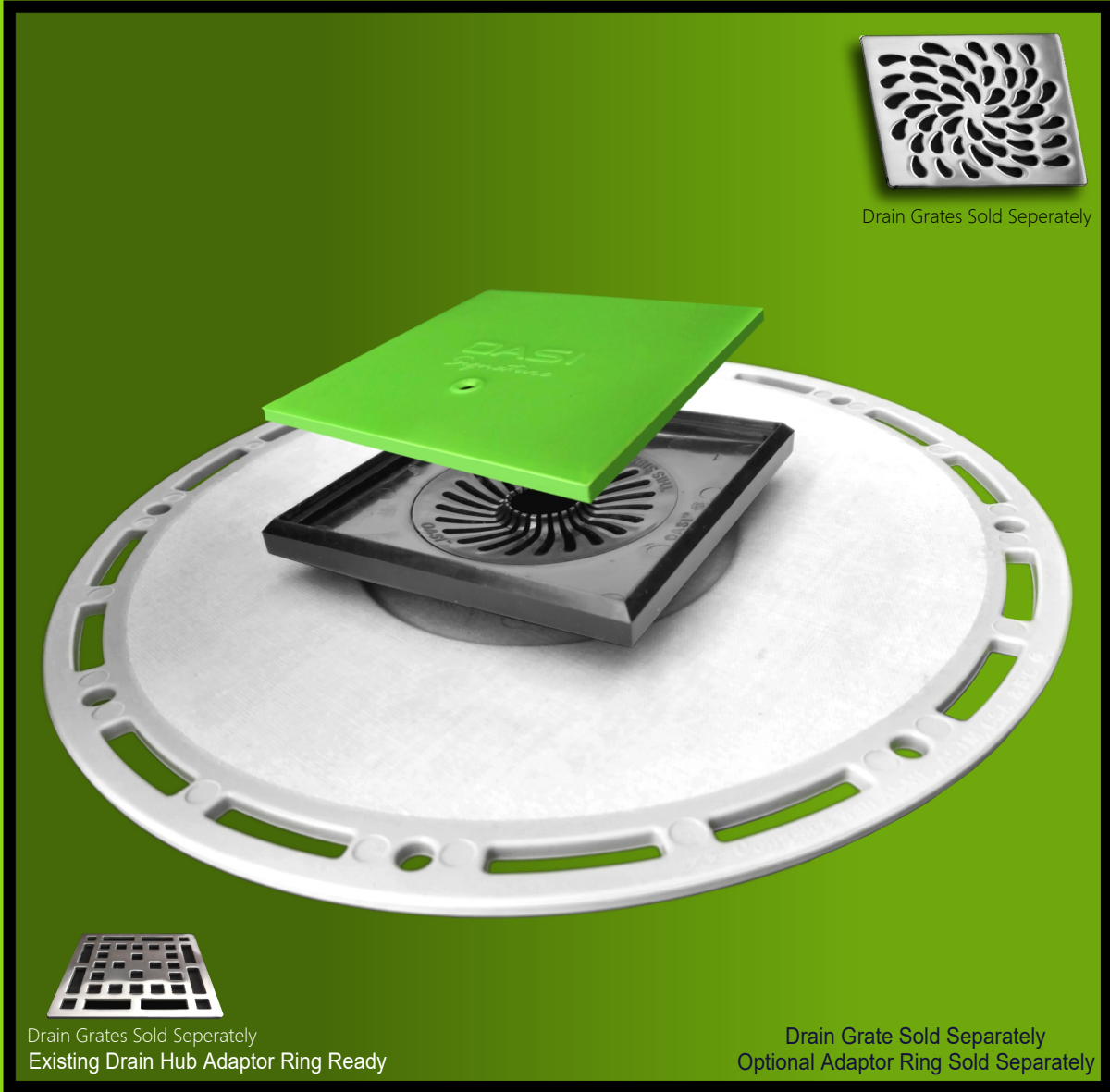
OASI 4" SQUARE DRAIN GRATE
SIZE: 3.75" X 3.75" X 3/16"

PLACE UPC CODE
OVER HERE



OASI BONDING FLANGE DRAIN

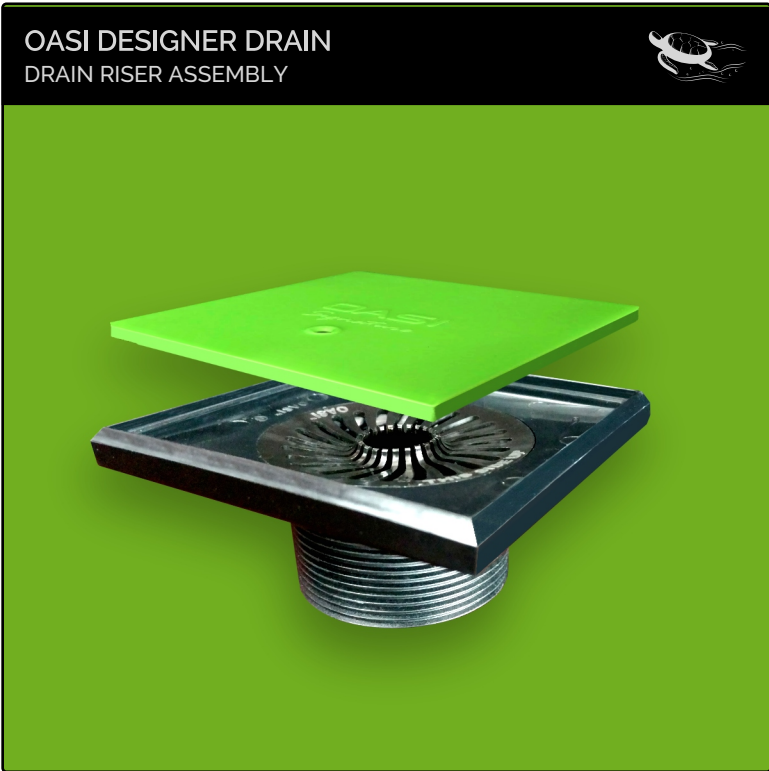
OASI DESIGNER DRAIN



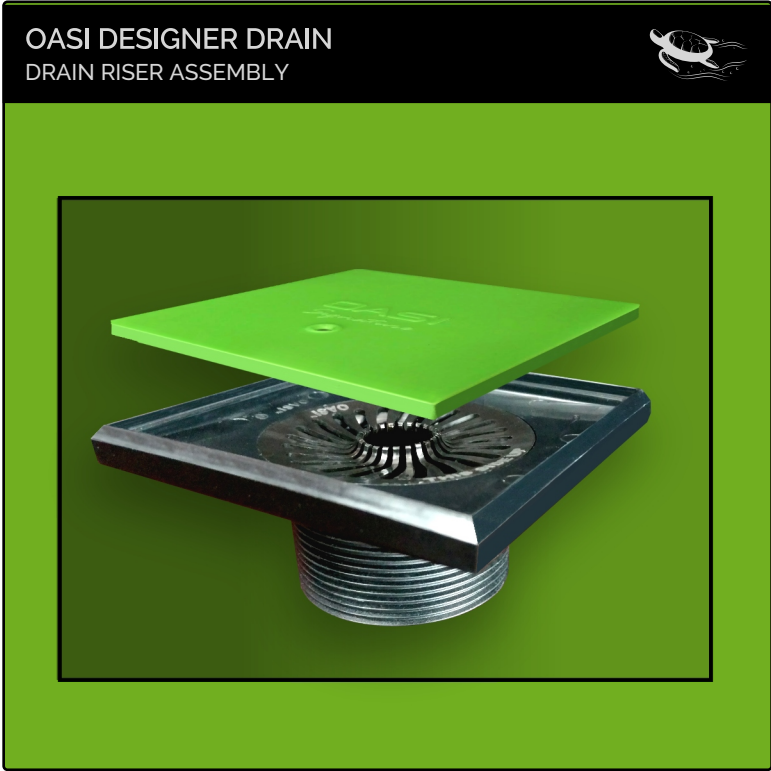
OASI
Signature Drains

Green

Front Option #1



Front Option #2



OASI
DRAIN

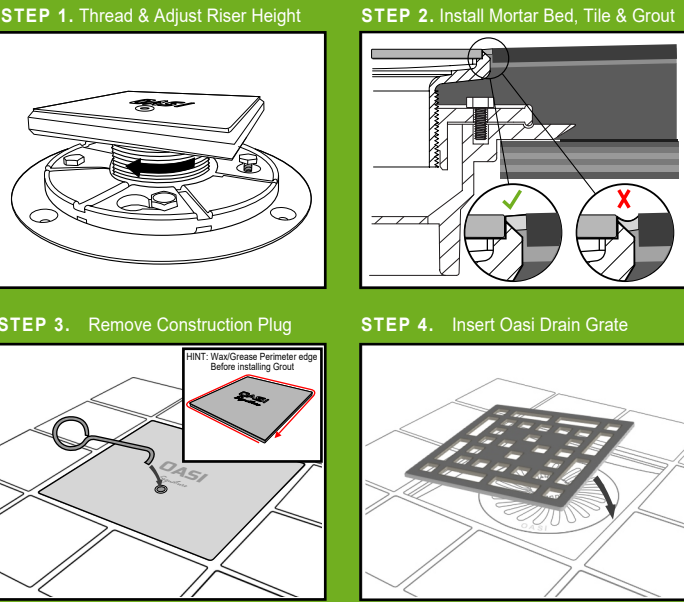
Darker Green

CLAMPING RING DRAIN RISER

Mat Finish

OASI
DRAIN

INSTALLATION



INSTALLATION INSTRUCTIONS

New Waste Pipe Application



Step 1. Dry-fit the Oasi drain bonding flange body onto the newly installed 2-inch waste pipe that is cut slightly (a couple of inches) longer than the top of the subfloor. Now, measure the distance that the outside edge of the bonding flange needs to go down to be at the desired final height. Next, cut the "measured amount" off from the 2-inch waste pipe.

Step 2. Dry-fit the Oasi drain bonding flange body to ensure the desired height is achieved. Remove flange.

Step 3. Apply a generous (approximately 1/4" thick) layer of thin-set mortar below the drain flange area.

Step 4. Cement the drain bonding flange body into the 2-inch waste pipe using thin-set mortar or PVC to ABS in needed cement glue, and at the same time embedding the bonding flange down into the thinset mortar.

Existing Drain Hub Application



Step 1. Remove the drain grate riser and clamping ring from the existing floor drain.

Step 2. Align the bolt pattern of the clamping ring with the bolt holes of the existing floor drain flange.

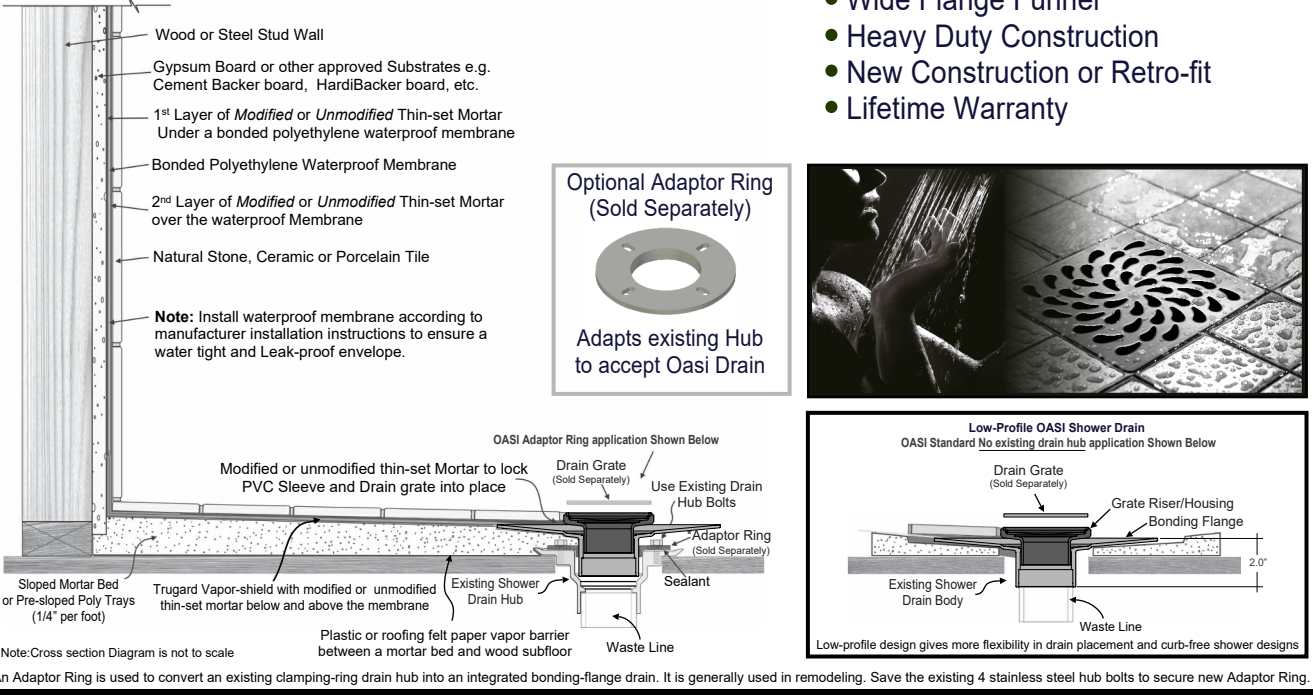
Step 3. Apply a continuous 1/4 inch bead of waterproof Sealant to the inside edge of the existing clamping floor drain flange and around each bolt hole.

Step 4. Install the adaptor ring on the existing floor drain flange, aligning the bolt holes. Reinsert and tighten the bolts using a crossing pattern.

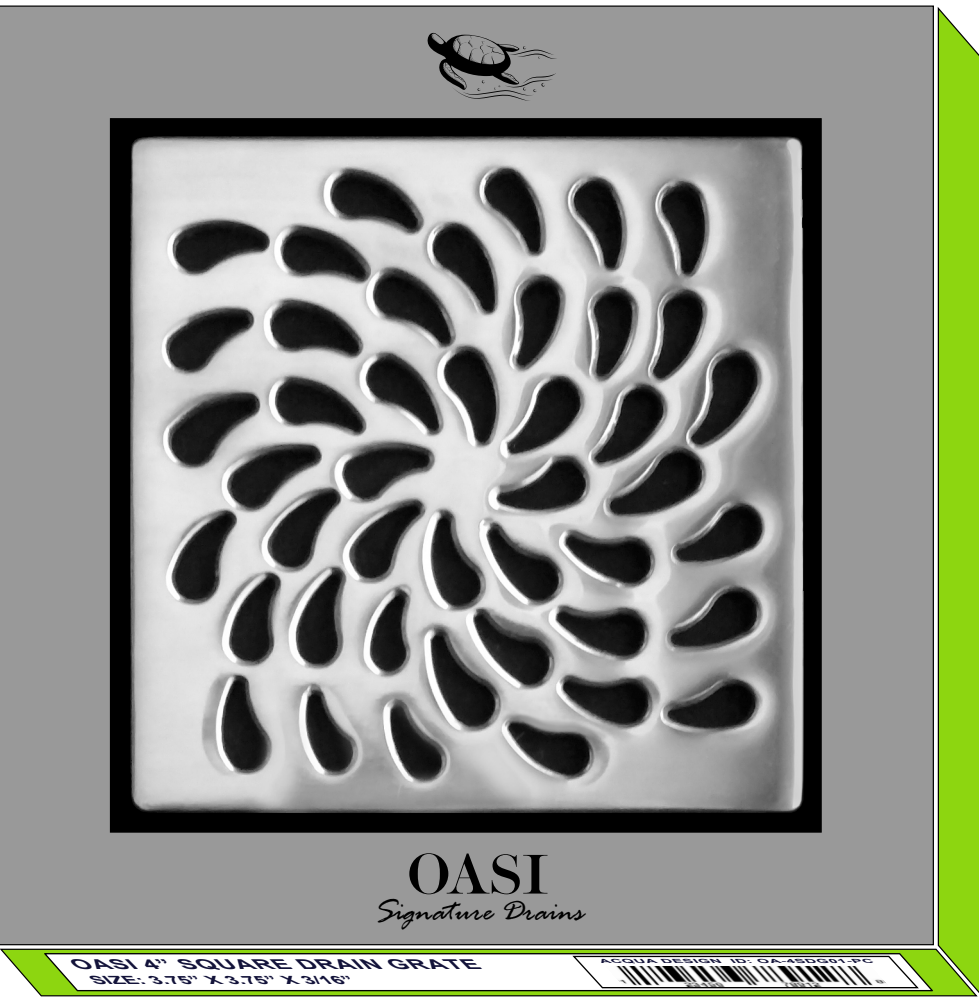
Step 5. Apply a continuous 1/4 inch bead of waterproof Sealant to the inside edge of the adaptor ring and around each bolt hole.

Step 6. Insert glued Drain Body sleeve into Adaptor Ring and at the same time embedding the bonding flange down into the thinset mortar.

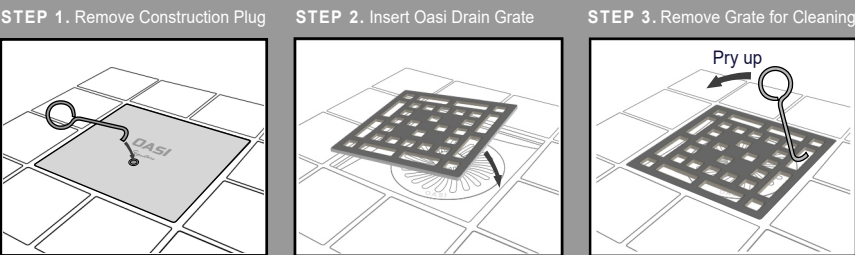
Detailed Cross-section



DRAIN GRATE BOX



INSTALLATION



DRAIN GRATE FEATURES

- Art Style Designs
- Ultra Strong Construction
- Grate puller included
- Lifetime Warranty

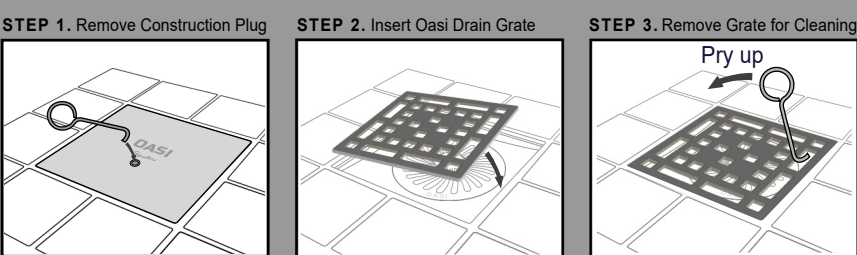
Visit www.oasihome.com about drain maintenance, finishes, installations and Warranty

OASI 4" SQUARE DRAIN GRATE
SIZE: 3.75" X 3.75" X 3/16"

PLACE UPC CODE
OVER HERE



INSTALLATION



DRAIN GRATE FEATURES

- Art Style Designs
- Ultra Strong Construction
- Grate puller included
- Lifetime Warranty

Visit www.oasihome.com about drain maintenance, finishes, installations and Warranty

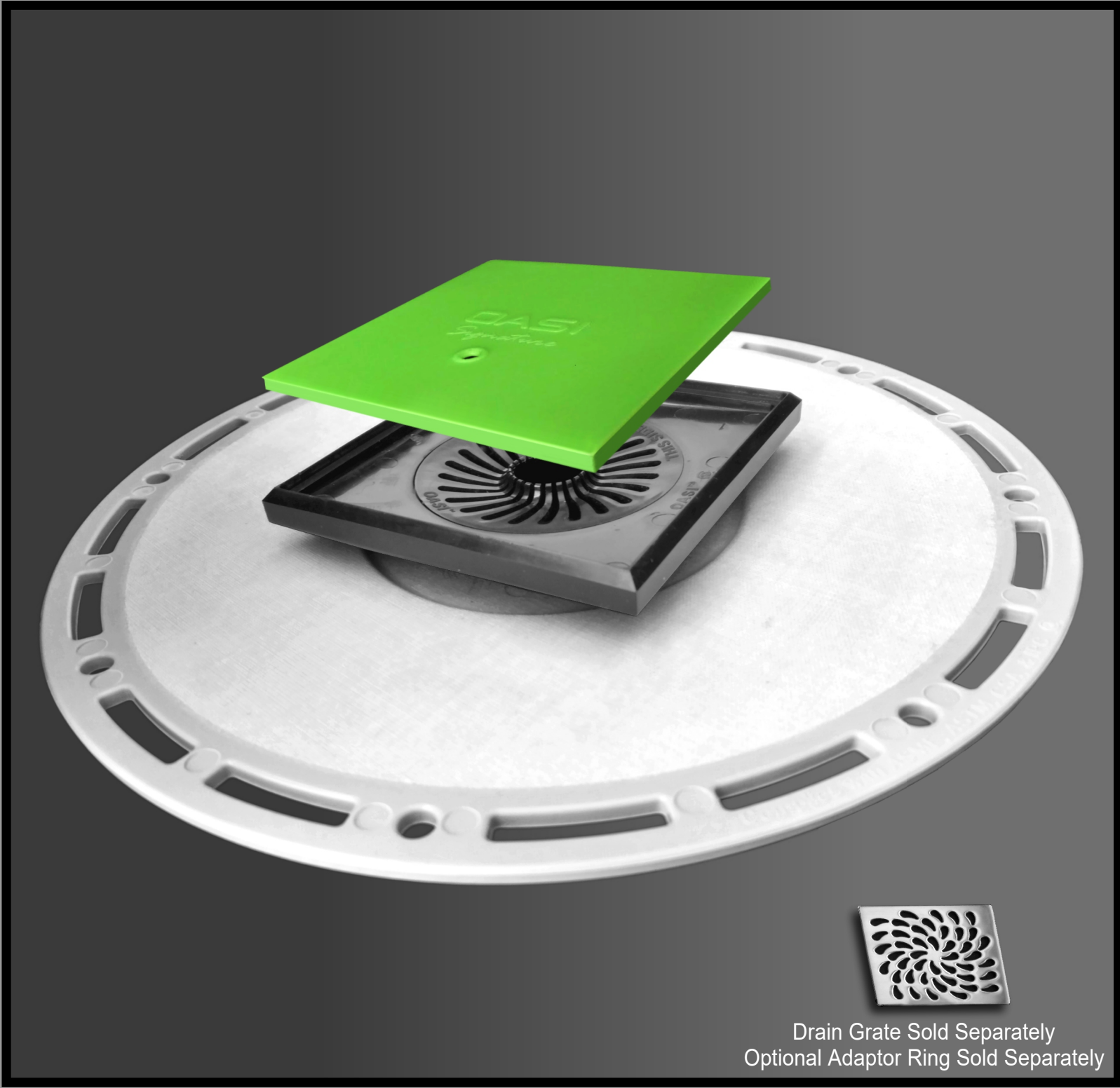
Italian Inspired

Glossy or Semi-gloss White Box



2.0" Max. for outside box measurement

Designer Shower Drain



Drain Grate Sold Separately
Optional Adaptor Ring Sold Separately

DRAIN BONDING FLANGE & GRATE RISER

Compatible with most existing Drain Hubs with optional Adaptor Ring

10.0" Max. for outside box measurement

INSTALLATION INSTRUCTIONS

New Waste Pipe Application

Step 1. Dry-fit the Oasi drain bonding flange body onto the newly installed 2-inch waste pipe that is cut slightly (a couple of inches) longer than the top of the subfloor. Now, measure the distance that the outside edge of the bonding flange needs to go down to be at the desired final height. Next, cut the "measured amount" off from the 2-inch waste pipe.

Step 2. Dry-fit the Oasi drain bonding flange body to ensure the desired height is achieved. Remove flange.

Step 3. Apply a generous (approximately 1/4" thick) layer of thin-set mortar below the drain flange area.

Step 4. Cement glue the Drain flange body to the 2-inch waste pipe using PVC (or PVC to ABS in needed)cement glue, and at the same time embedding the bonding flange down into the thinset mortar.

For more installation help, visit or contact Oasi at:
www.OasiHome.com
Support@OasiHome.com

Existing Drain Hub Application

Step 1. Remove the drain grate riser and clamping ring from the existing floor drain.

Step 2. Align the bolt pattern of the clamping ring with the bolt openings in the adaptor ring. **If needed remove "knockouts"** to allow proper placement of the bolts.

NOTE: Be sure to save the existing bolts for the installation of the adaptor ring.

Step 3. Apply a continuous 1/4 inch bead of waterproof Sealant to the inside edge of the existing clamping floor drain flange and around each bolt hole.

Step 4. Install the adaptor ring on the existing floor drain flange, aligning the bolt holes. Reinsert and tighten the bolts using a crossing pattern to create even compression. ***NOTE***: Bolts are to be finger tight plus 1/4 turn. Do not over tighten as this may warp the adaptor ring.

Step 5. Next, prime and cement glue the Trugard drain body to the Adaptor Ring. Apply the cement glue to both the Drain body sleeve and the inside opening of the Adaptor Ring.

Step 6. Insert glued Drain Body sleeve into Adaptor Ring and at the same time embedding the bonding flange down into the thinset mortar.

Detailed Cross-section

Note: Install waterproof membrane according to manufacturer installation instructions to ensure a water tight and Leak-proof envelope.

Optional Adaptor Ring
(Sold Separately)

Adapts existing Hub to accept Oasi Drain

Low-Profile OASI Shower Drain

Low-profile design gives more flexibility in drain placement and curb-free shower designs

DRAIN FEATURES

- Wide Flange Funnel
- Heavy Duty Construction
- New Construction or Retro-fit
- Lifetime Warranty

Drain Grates Sold Separately

Optional Adaptor Ring Sold Separately

Construction Plug

Hair Trap

Grate Housing Riser

Wide Flange Funnel

Included Inside

DRAIN BONDING FLANGE

DRAIN GRATE RISER

CONSTRUCTION PLUG

HAIR TRAP

Complies with ASME, ASTM, UPC, IPC, & CSA

ASME A112.18.2 / CSA B125.2

Product ID#: OA-DRN-BF

6 85256 28715 5

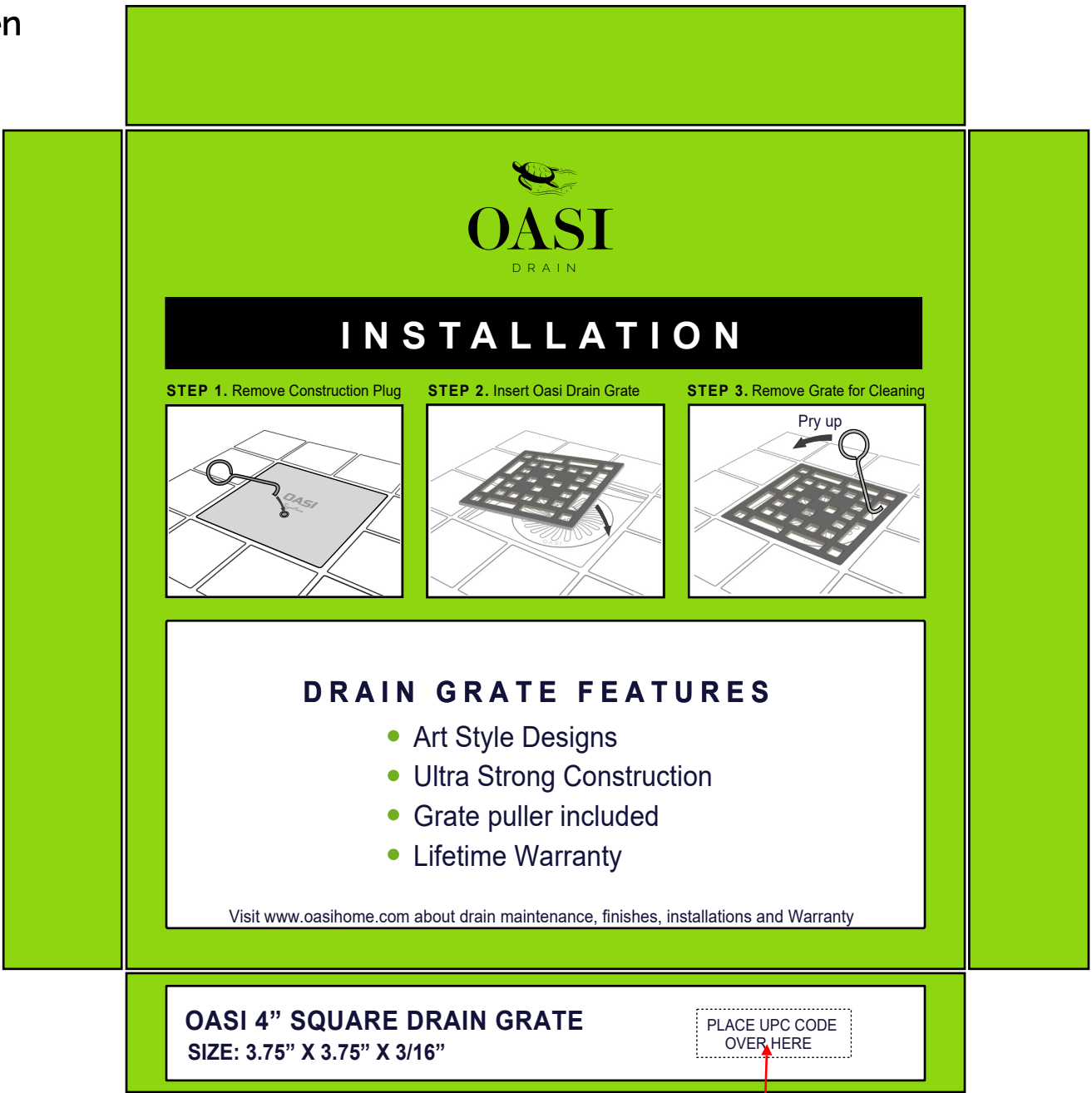
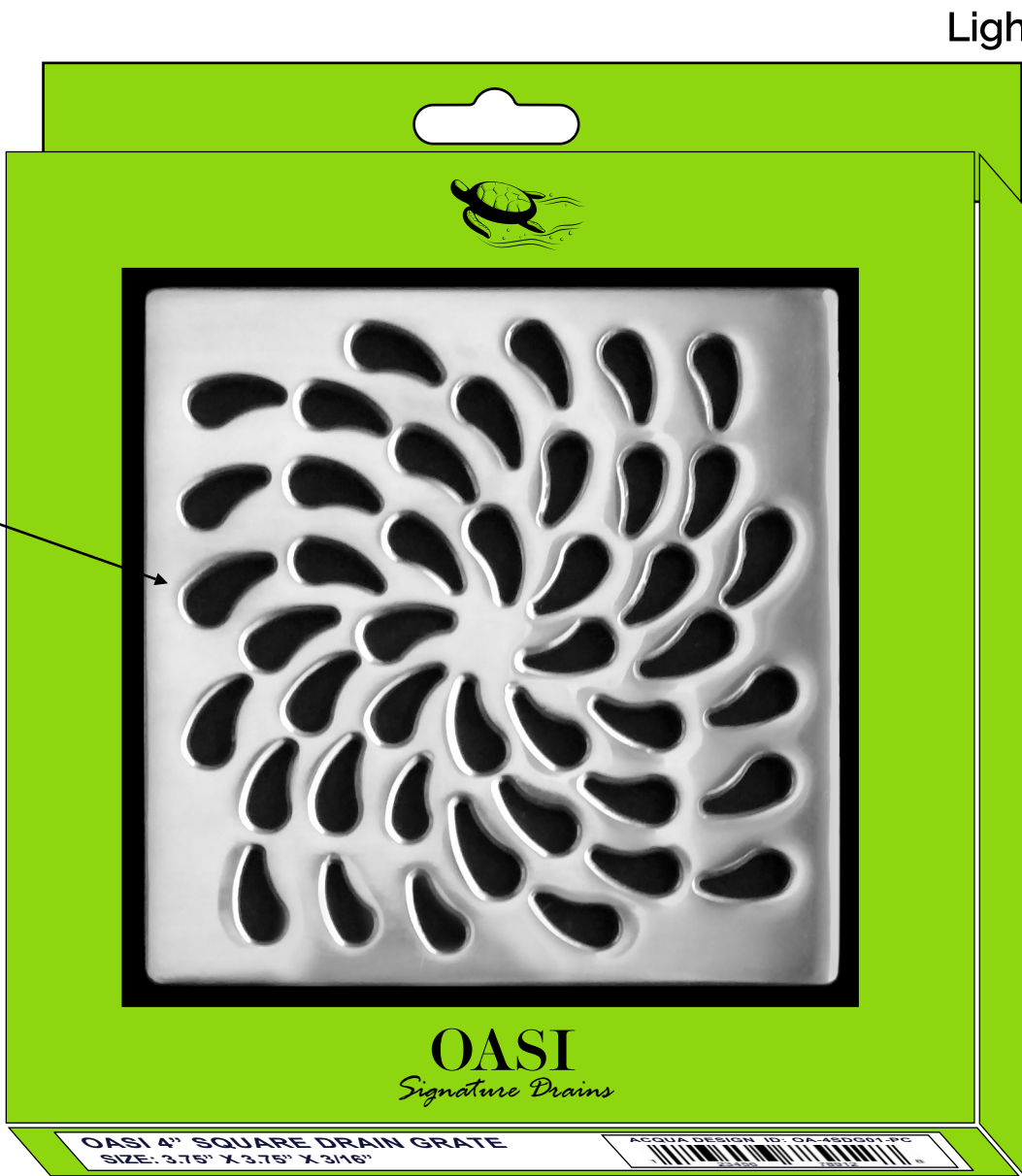
www.OasiHome.com

Manufactured in China

DRAIN GRATE BOX

Lighter Green

See Through plastic window



See Through plastic window



Drain Body Box

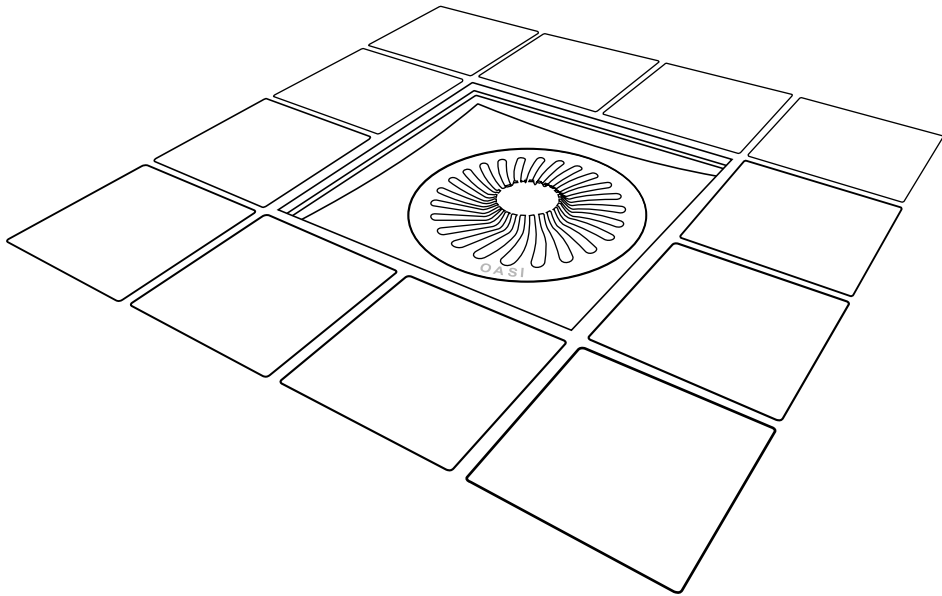
Luxury Shower Drain



Possibly a better signature/script font

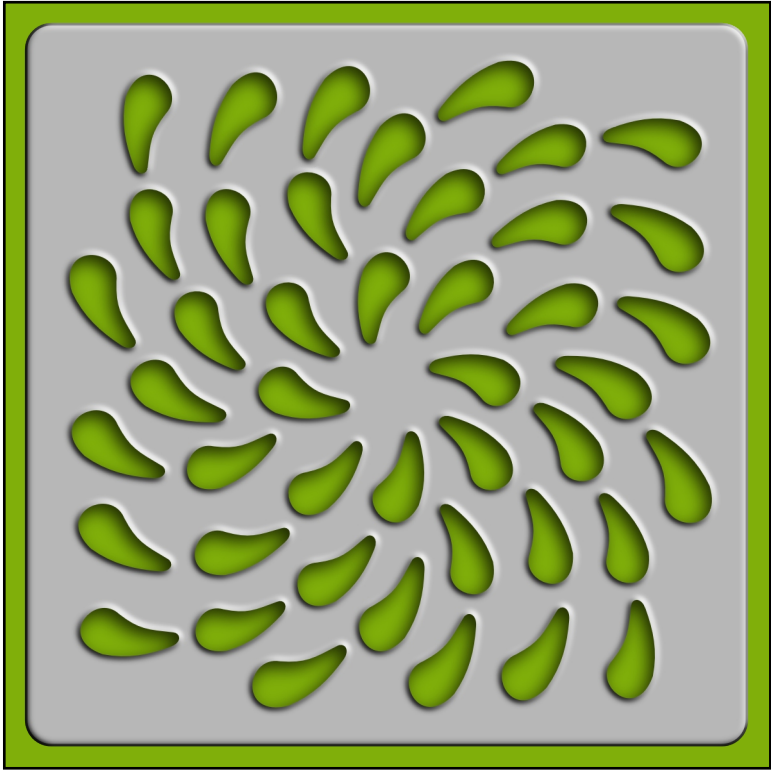
Oasis
Signature

Luxury Shower Drains



White Drain Grate Box

Front



OASI
Signature

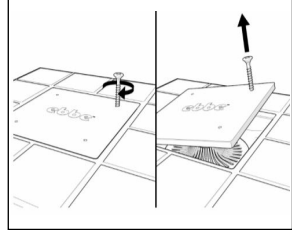
Back

OASI

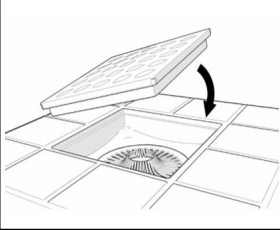
Luxury Shower Drain

INSTALLATION

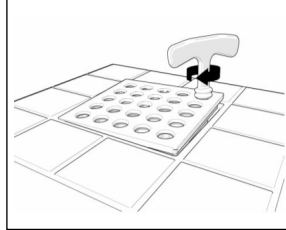
STEP 1. Remove Construction Plug



STEP 2. Insert Oasi Drain Grate



STEP 3. Remove Grate for Cleaning



DRAIN GRATE FEATURES

- Art Style Designs
- Ultra Strong Construction
- Grate puller included
- Lifetime Warranty

Top & Sides

GRATE FEATURES

- Existing Drain Hub Adaptor Ring Ready
-
- Grate puller included
- Lifetime Warranty

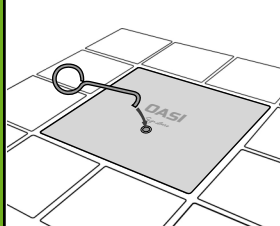
*Adaptor Ring sold seperately

Back

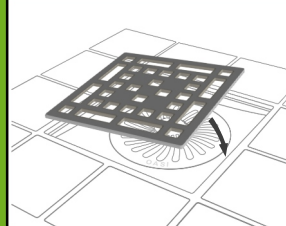
OASI
DRAIN

INSTALLATION

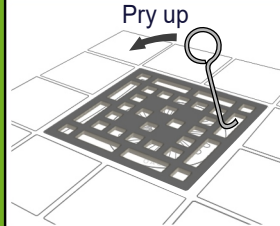
STEP 1. Remove Construction Plug



STEP 2. Insert Oasi Drain Grate



STEP 3. Remove Grate for Cleaning



DRAIN GRATE FEATURES

- Art Style Designs
- Ultra Strong Construction
- Grate puller included
- Lifetime Warranty

Visit www.oasihome.com about drain maintenance, finishes, installations and Warranty

OASI
YOUR OASIS

